

# BGDISC

Bruce Grey Data Information Sharing Collaborative

## SUMMER 2018

### What's new?

In Spring of 2018:

- We added more data and information to the holdings
- We continued to improve the website: <https://bgdisc.ca>
- We started the recruitment process for a Fall co-op student from the University of Waterloo to work as an Open Data Analyst, working on the website and training other agencies to share their data
- We continued to reach out to local agencies to join the collaborative, delivering presentations at local agency meetings

### Vision

Data assists well-informed decision-making, contributing to prosperity and well-being for the Community of Bruce Grey.

### What's Next?

In Summer 2018:

- Selecting and hiring a new co-op student Open Data Analyst
- We are actively encouraging new membership and the posting of new data holdings to the website
- We're adding new content and finding new ways of sharing information through Data Stories

### What Are We About?

BGDISC is a collective of not-for-profit, social-service, government, health, and education organizations that seek to mobilize community decision-makers to share vital local rural data to better inform regional programming, policies, funding, and social services to support prosperity, sustainability and the well-being of the community.

Visit the site at:  
<https://BGDISC.ca>

### Who is on the Advisory Committee?

Community Foundation Grey Bruce

Grey Bruce Children's Alliance

Four County Labour Market Planning Board

County of Grey

County of Bruce

Healthy Communities Partnership

Grey Bruce Health Unit

Join our mailing list for updates and newsletters.

**Subscribe Now!**

## What's been added so far?

- Grey County Trails
  - Grey County Official Plan GIS Data
  - Grey County Roads Data
  - Grey County Rural Business Listing
  - Grey County Children's Services Overview
    - Grey County Early Development Instrument Results
    - Grey County Children's Services Overview
  - Child Care Waitlist
  - Alcohol Vendors Grey Bruce
  - Food Security Assets
  - EmployerOne Summary Report
- Census 2016 Results
    - Population by age and sex
    - Dwellings and Housing
    - Families, Households, Marital Status
    - Income, Labour, Commute to Work
    - Mobility, Migration
    - Immigration, Ethnocultural Diversity, Aboriginal Identity
  - Backpack Program – United Way of Bruce Grey
  - Utility Assistance Program – United Way of Bruce Grey

### NEW SINCE SPRING:

- Grey County 211 Statistics for 2017
- A Profile of Child, Youth and Family Health in Grey and Bruce Counties

## BGDISC Open Data Analyst Co-op Student

**BGDISC is getting a University of Waterloo co-op student. The Open Data Analyst will:**

- work to improve the website look and feel
- research open data best practices
- promote the website
- help members learn to use the website
- build and share data stories
- educate local groups on the benefits of local data
- plan and lead a community workshop event



## Summer and BGDISC: Presentations!

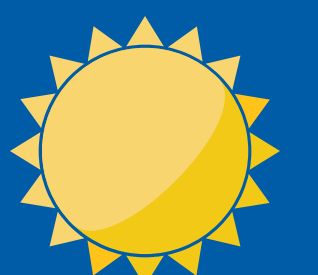
If your organization would like an introduction to BGDISC, contact Gemma at 519-881-2725 x122

## Coming This Fall

On-site Training

## Share Your Data: Youth Vital Signs Report

This year, Community Foundation Grey Bruce is producing a Youth Vital Signs Report. If you think your data or reports could be used to enhance this report, please post them on BGDISC by the end of summer. Remember to add the tag "Youth" to the content that you post!



**Have a Safe and Healthy Summer!**